

2006年度 特定非営利活動法人に係る事業規模状況【地域別】

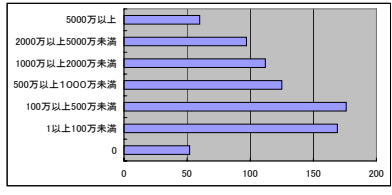
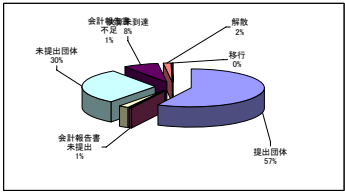
2007 9月現在

■全国 事業報告書提出状況(H19.9)

Table showing national business report submission status with columns for submission status, number of organizations, and percentages.

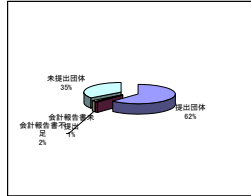
■全国 事業規模状況

Table showing national business scale status with columns for scale ranges, number of organizations, and percentages.



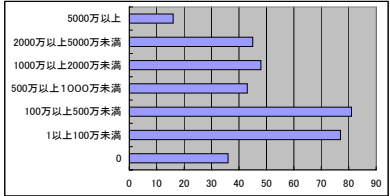
①札幌市 事業報告書提出状況

Table showing Sapporo business report submission status.



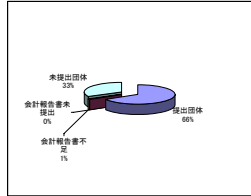
①札幌市 事業規模状況

Table showing Sapporo business scale status.



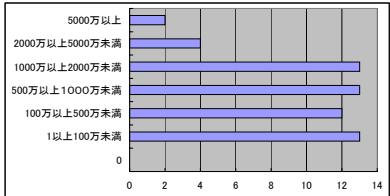
②石狩支庁 事業報告書提出状況

Table showing Ishikari subprefecture business report submission status.



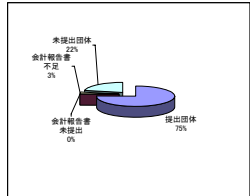
②石狩支庁 事業規模状況

Table showing Ishikari subprefecture business scale status.



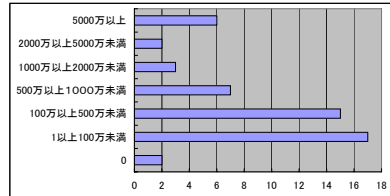
③渡島支庁 事業報告書提出状況

Table showing Oshima subprefecture business report submission status.



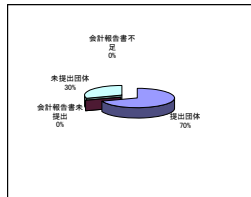
③渡島支庁 事業規模状況

Table showing Oshima subprefecture business scale status.



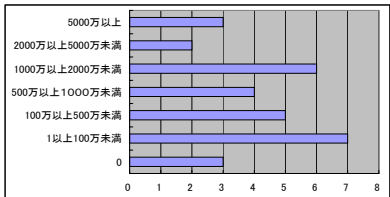
④後志支庁 事業報告書提出状況

Table showing Sochi subprefecture business report submission status.



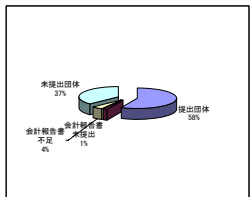
④後志支庁 事業規模状況

Table showing Sochi subprefecture business scale status.



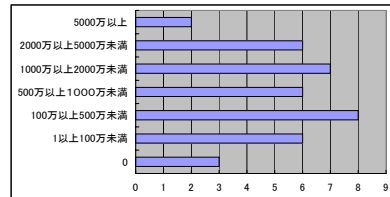
⑤空知支庁 事業報告書提出状況

Table showing Sorachi subprefecture business report submission status.



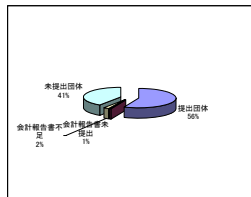
⑤空知支庁 事業規模状況

Table showing Sorachi subprefecture business scale status.



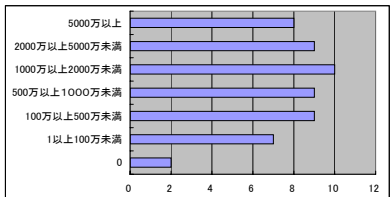
⑥上川支庁 事業報告書提出状況

Table showing Kamikawa subprefecture business report submission status.



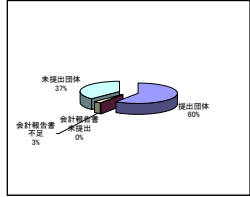
⑥上川支庁 事業規模状況

Table showing Kamikawa subprefecture business scale status.



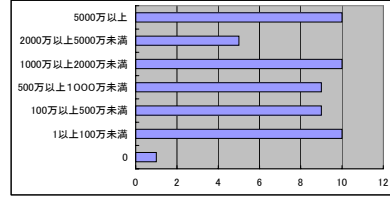
⑦胆振支庁 事業報告書提出状況

Table showing Ishikari subprefecture business report submission status.



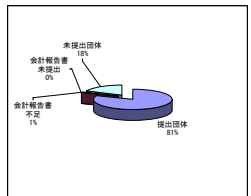
⑦胆振支庁 事業規模状況

Table showing Ishikari subprefecture business scale status.



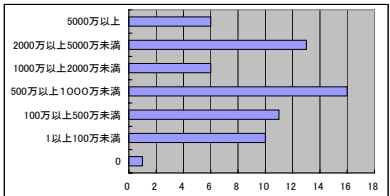
⑧十勝支庁 事業報告書提出状況

Table showing Tokachi subprefecture business report submission status.



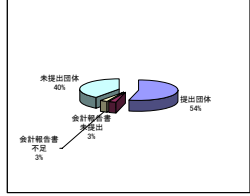
⑧十勝支庁 事業規模状況

Table showing Tokachi subprefecture business scale status.



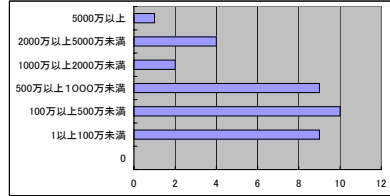
⑨網走支庁 事業報告書提出状況

Table showing Nemuro subprefecture business report submission status.



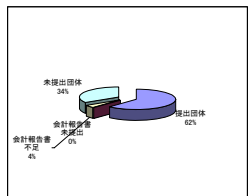
⑨網走支庁 事業規模状況

Table showing Nemuro subprefecture business scale status.



⑩その他の支庁 事業報告書提出状況

Table showing other subprefecture business report submission status.



⑩その他の支庁 事業規模状況

Table showing other subprefecture business scale status.

